



# *Aquaman*

REMOTE MONITORING SOLUTIONS

## LIQUID & WATER LEAKAGE ALARM SYSTEM

Web-based Monitoring And  
Alarm Notification

RELIABLE  
FLEXIBLE  
AFFORDABLE

# Aquaman Liquid Leakage Alarm System

## Liquid & Water Sensing Cable

### Description

The Aquaman AQM-W101 Liquid and Water Sensing Cable is used to detect the presence of water or any conductive fluid. The sensing cable is durable, easy to clean, fast drying, and able to resist damage from most contaminants. The cable's abrasion-resistant polymer core increases its strength and durability. The cable is constructed with conductive polymer and covered with insulating mesh to eliminate the chance of false alarms due to short circuit with metal objects. AQM-W101 Liquid and Water Sensing Cable is available in modular forms with pre-installed connectors with four different lengths, 5m, 10m, 15m and 30m.



### Specification

#### Key Feature:

- Durable
- Easy to clean
- Fast drying
- Helps eliminate false alarms
- Able to resist damage from most contaminants
- Highly flexible - resists bends and kinds
- Quick, simple installation and easy system expansion
- Lies flat after installation
- Non-conductive polymer construction
- Thermally bonded polymer-coated carrier
- Available in standard and custom lengths with pre-installed end connectors

#### Sheer Strength:

>180lbs. (81kg)

#### Cut Through Resistance:

>180kg with 0.127mm blade

#### Abrasion Resistance :

60 cycles

#### Operating Environment: Temperature :

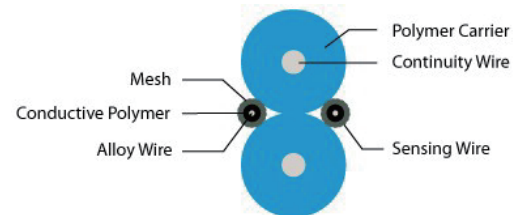
0°C - 75°C

Humidity: 5 - 95% RH, non-condensing

#### Certifications :

RoHs compliant

CE



#### Cable Diameter :

<6.35 mm

#### Cable Weight :

29.74 g/m

#### Cable Color :

Blue

#### Connector :

Black Plastic

#### Package Contents

Liquid and Water Sensing Cable



Liquid and Water Sensing Cable, 5m	•••••	AQM-W101-5M
Liquid and Water Sensing Cable, 10m	•••••	AQM-W101-10M
Liquid and Water Sensing Cable, 15m	•••••	AQM-W101-15M
Liquid and Water Sensing Cable, 30m	•••••	AQM-W101-30M

# Liquid & Water Sensing Cable

## Description



The Aquaman AQM-W111 Liquid & Water Sensing Cable is used to detect the presence of water, mild acid or mild alkaline at any point along its length. Installed with Aquaman Leakage Alarm System, the cables senses liquid leakage and triggers alarm. The cable is small, lightweight and flexible, allowing easy installation. AQM-W111 Liquid & Water Sensing Cable is available in modular forms with factory pre-molded connectors of three different lengths: 5m, 10m and 15m.

## Specifications

### Package Contents

Liquid & Water Sensing Cable



**Model :**  
AQM-W111

**Cable Diameter :**  
6.0mm nominal

**Cable Weight :**  
<30 g/m

**Cable Color :**  
Blue

**Connector :**  
Black Plastic

**Tensile Strength :**  
>30 kg

### Certifications :

RoHs  
CE

### Insulation Impedance:

≥ 7M Ω, DC 100V

### Working Conditions :

Temperature: 0°C ~ 60°C  
Humidity: 5%~95% (Non-condensing)

# Aquaman Liquid Leakage Alarm System

## Spot Type Liquid & Water Leakage Detector



### Description

The Aquaman AQM-215 Spot Type Liquid & Water Leakage Detector is used to detect the presence of liquid on horizontal surface. High Voltage and Current Rating of the Dry Contract Relay Output allow AQM-215 Spot Type Liquid & Water Leakage Detector to control electrical solenoid water valve directly. Green LED indicates the power of the device is on while Blinking Red LED indicates the detection of liquid.

### Package Contents

Spot Type Liquid & Water Leakage Detector



### Specifications

**Dimensions:**

57 x 47 x 39mm  
(without the sensing probes)

**Weight:**

125g

**Housing:**

Grey plastic

**Power Requirement:**

12-24V DC

**Maximum Current Consumption:**

65mA

**Output:**

Normally energized relay, Dry contact output  
(Normally Closed / Normally Open)

**Maximum Output Power Rating:**

250V AC, 1A

**Recognition Time:**

5 Seconds

**Sensing Probes:**

~ Package comes with a pair of "L" shape conductive electrode probes which can be set up into two different detection height levels by different orientation.

~ Can be replaced with most of the water sensing cables in the market.

**Compatibility:**

All Aquaman models or standalone

Spot Type Liquid & Water Leakage Detector . . . . . AQM-W215

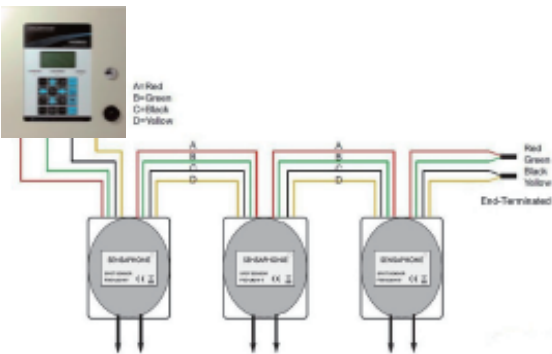
# Spot Type Liquid & Water Leakage Detector



## Description

The Aquaman AQM-W216 Spot Type Liquid & Water Leakage Detector is used to detect the presence of liquid on horizontal surface. Multiple detectors can be connected in series.

AQM-W8000 Locating  
Liquid & Water Leakage  
Alarm Panel



## Package Contents

Spot Type Liquid & Water  
Leakage Detector



## Specifications

### Dimensions:

57 x 47 x 39mm  
(without the sensing probes)

### Weight:

50 g

### Housing:

Grey plastic

### Sensing Probes:

~ Package comes with a pair of "L" shape conductive electrode probes which can be set up into two different detection height levels by different orientation.

~ Can be replaced with most of the water sensing cables in the market.

### Compatibility:

AQM-W8500, AQM-W8000

Spot Type Liquid & Water Leakage Detector

Equivalent to 5m Cable Length . . . . . AQM-W216-5

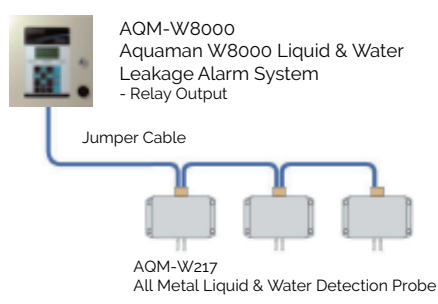
Equivalent to 10m Cable Length . . . . . AQM-W216-10

# Aquaman Liquid Leakage Alarm System

## All Metal Liquid & Water Detection Probe



The diagram below shown a typical system configurations when using AQM-W217:



Package Contents

All Metal Liquid & Water Detection Probe



### Description

The Aquaman AQM-W217 All Metal Liquid & Water Detection Probe is designed because of fire-rated consideration. It allows the monitoring for leaks in area where sensing cables would be difficult to install either because of the harsh operating environment in which detection is required, or the impracticality of installing lengths of sensing cable in vulnerable areas.

AQM-W217 has been designed for use with any of the Aquaman Liquid & Water Leakage Alarm System and has an equivalent cable length of 15m.

### Specifications

**Dimensions:**  
148L x 115W x 34H mm  
(plus Probe Tip length)

**Housing:**  
Diecast Aluminum Alloy 380

**Probe Length:**  
25mm

**Probe with Sleaving:**  
363 Stainless Steel  
Heat Treated Fiberglass Sleaving

**Probe Height above Mounting Surface:**  
~ 1mm

**Optional Conduit Support - Flexible Conduit Connector:**  
Material: Natural Brass  
Hole Diameter: 20mm

All Metal Liquid & Water Detection Probe . . . . .	AQM-W217
--	----------

# Modular Leader Cable



## Description

The Aquaman AQM-W301 Modular Leader Cable is provide with sensing cable connector on one end, with the other end ready for connection on the wire terminal of the Liquid Leakage Alarm System.

### Package Contents

Modular Leader Cable



## Specifications

**Connector:**  
Black Plastic

**Wires:**  
4x21 AWG Conductors

**Cable Length:**  
5m

**Isolation Resistance:**  
>20MΩ

**Conductor Resistance:**  
<42 Ω per km

# Aquaman Liquid Leakage Alarm System

## Leak Detection Accessories

### Modular Jumper Cable



#### Description

The Aquaman AQM-W302 Modular Jumper Cable is cable used for interconnection between separated sections of Aquaman Liquid & Water Sensing Cable. AQM-W302 Modular Jumper Cable is available in modular forms with pre-installed connectors with four different lengths, 5m, 10m, 15m and 30m.

#### Package Contents

Modular Jumper Cable



#### Specifications

**Connector:**

Black Plastic

**Wires:**

4x21 AWG Conductors

**Isolation Resistance:**

>20MΩ

**Conductor Resistance:**

<42 Ω per km

# Modular End Termination



## Description

The Aquaman AQM-W303 Modular End Termination is required at end of each Aquaman sensor circuit and each sensor branch circuit.

### Package Contents

Modular End Termination

### Specifications

**Connector:**  
Black Plastic



Modular End Termination . . . . .	AQM-W303
-----------------------------------	----------

# Aquaman Liquid Leakage Alarm System

## Leak Detection Accessories

### Branch Connection Box



#### Description

The Aquaman AQM-W304 Branch Connection Box adds simulated length of 5 meters (17 feet) on each branch when wired in series to make clear divisions between areas.

The 4 core jumper cables are connected directly into the terminal connectors within the IP65 housing.

The diagram below shows two typical system configurations when using the AQM-W304:



#### Specifications

**Dimensions:**

100 x 80 x 50mm

**Housing:**

White Plastic

#### Package Contents

Branch Connection Box

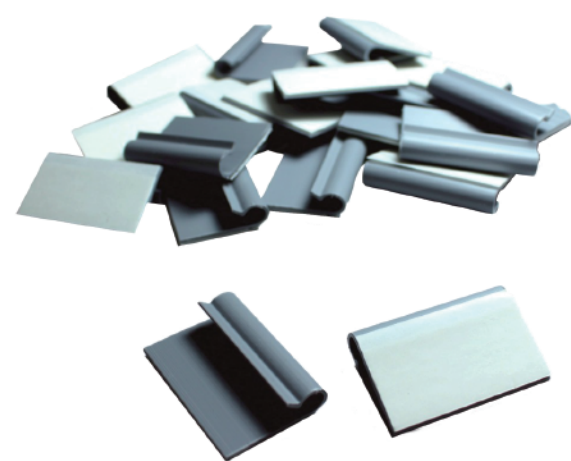


Branch Connecting Box . . . . . AQM W304

# Hold Down Clips with Adhesive Foam Tape

## Description

The Aquaman AQM-W305 Hold Down Clips are plastic cable clips with adhesive foam tape that can be attached to floors or other surfaces.



## Specifications

### Package Contents

Hold Down Clips  
(1 bag of 50 pcs)

### Plastic Clips

Grey Plastic

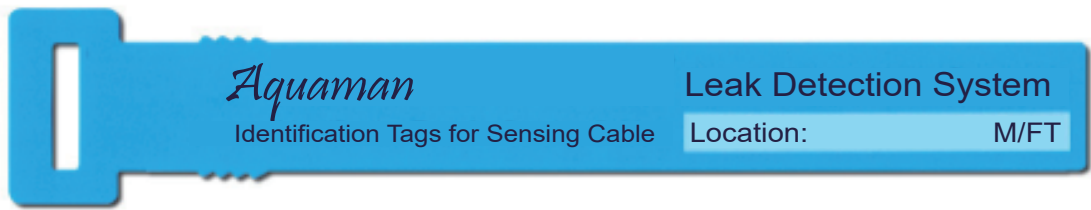


Hold Down Clips with Adhesive Foam Tape ..... AQM-W305

# Aquaman Liquid Leakage Alarm System

## Leak Detection Accessories

### Identification Tags for Sensing Cable



### Description

The Aquaman AQM-W306 Identification Tags for Sensing Cable are plastic tags that can be attached to sensing cables or other components to identify them in the Leak Detection System. The mapping distance can be written on the tag which helps identifying the leak location.

#### Package Contents

Identification Tags  
(1 bag of 50 pcs)

#### Specifications

**Dimensions:**  
197 x 38mm

**Plastic Tags:**  
Blue Plastic



# Modular Leader Cable



## Description

The Aquaman AQM-W311 Modular Leader Cable is provide with sensing cable connector on one end, with other end ready for connection to wire terminal ofthe Liquid & Water Alarm System.

## Specifications

**Connector:**

Black Plastic

**Isolation Resistance:**

>20M  $\Omega$

**Wires:**

4x24 AWG Conductors

**Conductor Resistance:**

<42 $\Omega$  per km

**Cable Length:**

5m

### Package Contents

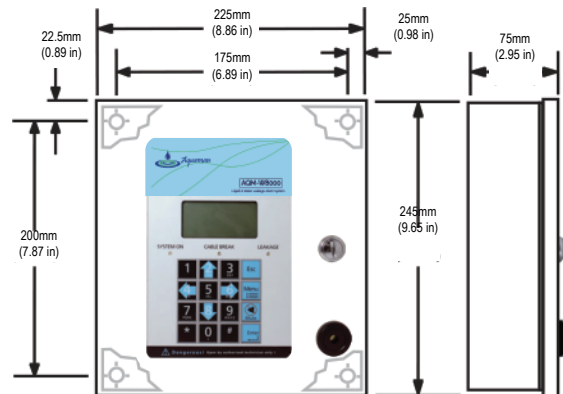
Modular Leader Cable



Modular leader Cable, 5m ..... AQM-W311

# Aquaman Liquid Leakage Alarm System

## PRODUCT DIMENSIONS



## SPECIFICATIONS

### INPUTS:

- 2 Input Channels
- Cable measured in Meter/Feet
- Max Length of Cable is 200m/650 feet
- Adjustable Sensitivity, ranging from 000-999 $\mu$ A
- Cable Resistance ranging from 00.00-99.99 ohm/meter

### OUTPUTS:

- 4 Relay Outputs (1A - 120VAC, 1A - 24VDC)
  - Normally Closed/Normally Open
- Switched when Leakage, Cable Break or Fault occurs

### LOCAL INDICATORS:

- LED
  - Power On (Green)
  - Cable Break (Orange)
  - Leakage (Red)
- 90dB Buzzer as audible alarm indicator

### POWER REQUIREMENTS:

- 12V  $\pm$  15 %
- Connection via wire Terminal
- Max Power Consumption is 5.4W
- Optional Backup Battery (7.2VDC, Ni-MH)

### PANEL FEATURES:

- LCD Display (128 x 64 pixels with backlight)
- Panel Language available in English or Chinese
- With Key Pad (4 x 4, 16 buttons) and Mute Button
- Built-in Web Server and Real Time Clock
- Power On Self Test
- Able to locate Point of Leakage
- Support Wall Mounting Installation
- Password Protection

### COMMUNICATION PORTS:

- RJ-45 Port
- Connection via UTP Cable

### WEB SERVER:

- Support the following Browser in English and Chinese: Internet Explorer 8, Firefox 4, Safari 5, Chrome 5 or above
- Support DHCP and Static IP Address
- Real-time Status (Auto update)
- Sending Email Alert to 4 Contacts via External SMTP Server
- Event Logging with 4,000 Entries (All samples include time stamp and date)
- Event Log Export available in XML and HTML format
- Password Protection

# Aquaman Liquid Leakage Alarm System

## Web Based Monitoring & Alarm Notification

Aquaman AQM-W8000 panel has 2 Input Channels and can monitor up to 200m sensing cable per channel. Liquid and Water Sensing Cable can be attached to expand the liquid leak detection capabilities throughout the facility.

AQM-W8000 provides real-time status of the site through the Internet (TCP/IP). It also sends alarm messages to users via e-mail. Audible and visual alarm are integrated into AQM-W8000 to indicate the status locally.

Summary History Setup Email Relay

Unit Name: AQM-W8000  
Location: Building A  
Description: Office

**Summary**

**CH.1**

Length: 2m Status: Normal  
Last Alarm: Leak 0m 04/19/2011 15:38:04

**CH.2**

Length: - Status: Cable Break  
Last Alarm: Cable Break 04/20/2011 17:03:21

### WEB STATUS:

Live status and history is only a webpage away. The AQM-W8000 built in web server provides quick and easy information about your monitored conditions. Even time stamped history reports are readily available online.

### WEB PROGRAMMING:

Built in web server for easy access to programming and status. Just point your browser to the AQM-W8000's webpage and fill in the blanks for a quick configuration.

Summary History Setup Email Relay

Unit Name: AQM-W8000  
Location: Building A  
Description: Office

**Setup**

MAC Address: FFFFFFFF  
Unit Name: WEB8000  
Location: Building A  
Description: Office

☐ Enable DHCP

IP Address: 192.168.1.254  
Gateway: 192.168.1.1  
Subnet Mask: 255.255.255.0  
Primary DNS: 192.168.1.1  
Secondary DNS: 0.0.0.0

Save

### MULTIPLE ALARM NOTIFICATION:

When monitored conditions detect any liquid or water leakage, the AQM-W8000 will notify you immediately by sending out email alarm messages. You can also view the status of the monitored conditions at the local panel or at the AQM-W8000's webpage.

Summary	History	Setup	Email	Relay
<b>Unit Name:</b> AQM-W8000 <b>Location:</b> Building A <b>Description:</b> Office				
History				
Date	Time	Channel	Event	
04/20/2011	17:03:21	CH.2	Cable Break	
04/20/2011	11:16:38	CH.2	Return Normal (Mail Sent)	
04/20/2011	11:16:32	CH.2	Leak 20m (Mail Sent)	
04/20/2011	11:05:16	CH.2	Return Normal (Mail Sent)	
04/20/2011	11:05:11	CH.2	Leak 20m (Mail Sent)	
04/20/2011	11:04:41	CH.2	Return Normal (Mail Sent)	
04/20/2011	11:04:36	CH.2	Leak 18m (Mail Sent)	
04/19/2011	15:38:31	CH.2	Return Normal	
04/19/2011	15:38:25	CH.2	Leak 20m	
04/19/2011	15:38:10	CH.1	Return Normal	
04/19/2011	15:38:04	CH.1	Leak 0m	
04/19/2011	15:27:40	CH.1	Return Normal (Mail Sent)	
04/19/2011	15:16:18	CH.1	Leak 0m (Mail Sent)	
04/19/2011	15:16:18	CH.1	Return Normal (Mail Sent)	

## ALARM HISTORY:

The AQM-W8000 can log up to 4,000 entries of Leak and Cable Break Alarm History. The eventlog history can export to XML or HTML files for data analysis.

## MULTIPLE LANGUAGE LCD DISPLAY:

The AQM-W8000 can have the LCD display either in English or in Simplified Chinese.

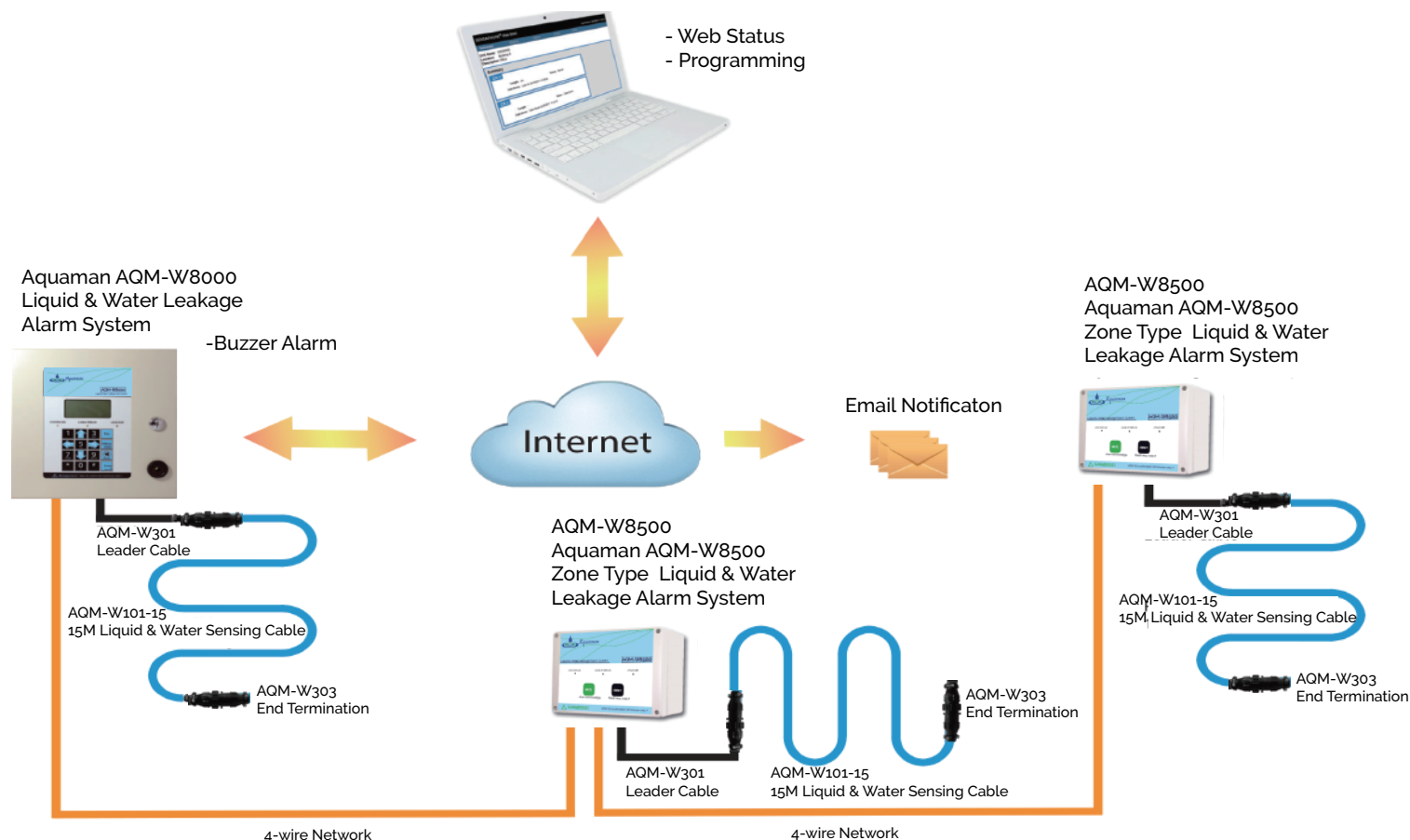
## 2 CHANNELS, 4 RELAYS:

Two input channels can be connected to a liquid & water sensing cable or a zone type water leakage detector. Four dry contact relay outputs are available.

## OPTIONAL BATTERY BACKUP:

With the battery backup, the AQM-W8000 can stay operational for two full hours while the power is out.

## TYPICAL APPLICATIONS



ACCESSORIES

ZONE TYPE LIQUID & WATER ALARM SYSTEM:

- Aquaman AQM-W8500 ..... AQM-W8500

SENSING CABLE:

- Liquid & Water Sensing Cable, 5m ..... AQM-W101-5M
- Liquid & Water Sensing Cable, 10m ..... AQM-W101-10M
- Liquid & Water Sensing Cable, 15m ..... AQM-W101-15M
- Liquid & Water Sensing Cable, 30m ..... AQM-W101-30M



SYSTEM COMPONENTS:

- Modular Leader Cable, 5m ..... AQM-W301
- Modular Jumper Cable, 5m ..... AQM-W302-5M
- Modular Jumper Cable, 10m ..... AQM-W302-10M
- Modular Jumper Cable, 15m ..... AQM-W302-15M
- Modular Jumper Cable, 30m ..... AQM-W302-30M
- Modular End Termination ..... AQM-W303
- Modular Branch Connector ..... AQM-W304
- Hold Down Clips with Adhesive Backs ..... AQM-W305
- Identification Tags for Sensing Cable ..... AQM-W306
- Testing Tool for Sensing Cable ..... AQM-W307



# Aquaman Liquid Leakage Alarm System

## Zone Type Liquid & Water Leakage Alarm System

Aquaman AQM-W8500 panel can be used for the leak protection of server rooms / technical services areas. Main application areas including: underfloor chilled water pipe, overhead fan coil units, hot water radiator units, sump tanks, drip trays, etc.

The system allows immediate detection of conductive (water acid or alkaline) or non-conductive (hydrocarbon fuel or organic solvent) by applying different type of liquid sensing cables.



### LOCAL INDICATORS:

Audible alert and LED visual indicators are available during an alarm to notify users the monitored conditions.

### 2 RELAY OUTPUTS:

Two relay outputs are available, the leakage relay and the fault relay (power failure and cable break)

### SAFE OPERATIONS:

AQM-W8500 has plenty of space for wiring inside the plastic enclosure, no connection exposes to the outside environment, this promotes safe operation and a tidy environment.

### SIMPLE AND USER FRIENDLY:

Simple wiring equipped with tactile button to provide users a better hands on experience.

## TYPICAL APPLICATIONS

AQM-W8500  
Aquaman W8500 Zone type  
Liquid & Water Leakage Alarm System

AQM-W8500  
Aquaman W8500 Zone type  
Liquid & Water Leakage Alarm System

AQM-W101-15M  
Aquaman W8500 Zone Type  
15M Liquid & Water Sensing Cable

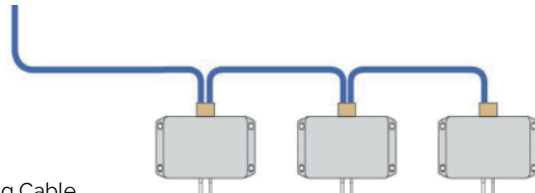


AQM-W216  
Sport Type Liquid & Water  
Leakage Detector

4-Wire Network



AQM-W101-15M  
15M Liquid & Water Sensing Cable



AQM-W217  
All Metal Liquid & Water Detection Probe

## SPECIFICATIONS

### INPUTS:

- Single Input Channel
  - Liquid Sensing Cable
  - Spot Sensor
- Adjustable Sensitivity

### OUTPUTS:

- 2 Relay Outputs
  - Leakage Relay ( Form C)
  - Fault Relay (Form C)

### LOCAL INDICATORS:

- LED
  - Power On (Green)
  - Cable Break (Orange)
  - Leakage (Red)
- Buzzer as audible alarm indicator, with Silent Switch

### PANEL FEATURES:

- Comes in an ABS Enclosure
- Dimension of panel is 125mm x 165mm x 75mm (Excluding Cable Gland)
- Weight of panel is 550g
- With Mute / Acknowledgement Button and Leakage Relay Reset Button
- Support Wall Mounting Installation

### POWER REQUIREMENTS:

- 110/220VAC, 50/60Hz, Single Phase or 12-24 V AC/DC
- Connection via Wire Terminal
- Max Power Consumption is 2W

## ACCESSORIES

### SENSING CABLE:

Modular Liquid & Water Sensing Cable ..... AQM-W111

### SPOT TYPE WATER LEAKAGE DETECTOR:

Sport Type Liquid & Water Leakage Detector .. AQM-W216  
All Metal Liquid & Water Detection Probe ..... AQM-W217

### SYSTEM COMPONENTS:

Modular Branch Connector ..... AQM-W304  
Hold Down Clips with Adhesive Backs .... AQM-W305  
Identification Tags for Sensing Cable ..... AQM-W306  
Testing Too for Sensing Cable ..... AQM-W307

\*Photos are for reference only.  
\*Specifications subject to change without notice.

# Aquaman Liquid Leakage Alarm System

## Panels, Cables and Accessories



### Aquaman AQM-W8000

Master Panel - Liquid Leakage Alarm System with a web-based platform.

AQM-W8000



### Aquaman AQM-W8500

Zone Type Liquid Leakage Alarm System.

AQM-W8500



### Liquid & Water Sensing Cable

Able to detect the presence of water or any conductive liquid.

AQM-W101-5M, Liquid & Water Sensing Cable  
AQM-W101-10M, Liquid & Water Sensing Cable  
AQM-W101-15M, Liquid & Water Sensing Cable  
AQM-W101-30M, Liquid & Water Sensing Cable



### Spot Type Liquid & Water Leakage Detector

Can be used standalone to detect the presence of liquid on a horizontal surface.

AQM-W215, Spot Type Liquid & Water Leakage Detector



### Liquid & Water Sensing Cable

Able to detect the presence of water or any conductive liquid.

AQM-W111, Liquid & Water Sensing Cable



### Spot Type Liquid & Water Leakage Detector

Multiple detectors can be connected in series to detect the presence of liquid on a horizontal surface.

AQM-W216-5, Spot Type Liquid & Water Leakage Detector  
(Equivalent to 5m Cable Length)  
AQM-W216-10, Spot Type Liquid & Water Leakage Detector  
(Equivalent to 10m Cable Length)



### All Metal Liquid & Water Detection Probe

Designed of fire-rated consideration.

AQM-W217, All Metal Liquid & Water Detection Probe



### Modular Leader Cable

Used for interconnecting between sensing cable and wire terminal of the liquid leakage alarm system.

AQM-W301, Modular Leader Cable, 5m



### Modular Jumper Cable

Used for interconnecting between separated sections of liquid sensing cable.

AQM-W302-5M, Modular Jumper Cable, 5m  
AQM-W302-10M, Modular Jumper Cable, 10m  
AQM-W302-15M, Modular Jumper Cable, 15m  
AQM-W302-30M, Modular Jumper Cable, 30m



### Modular End Termination

Used at the end of each sensor circuit and each branch circuit.

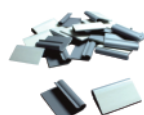
AQM-W303, Modular End Termination



### Branch Connecting Box

Used to add a simulated length of 5 meters on each branch when wired in series to make clear divisions between areas.

AQM-W-304, Branch Connecting Box



### Hold Down Clips with Adhesive Foam Tape

Used to attach liquid sensing cable to floors or other surfaces.

AQM-W305, Hold Down Clips with Adhesive Foam Tape.



### Identification Tags for Sensing Cable

Used to attach to sensing cables or other components. The mapping distance can be written on the tag which helps identifying the leak location.

AQM-W306, Identification Tags for Sensing Cable



### Modular Leader Cable

Used for interconnecting between sensing cable and wire terminal of the liquid leakage alarm system.

AQM-W311, Modular Leader Cable, 5m